



L-Shaped Corner Led Strip Connector Solderless 5050 Rgb Ip20 4 Pin

Our Product Introduction

for more products please visit us on ledslightstrip.com

Basic Information

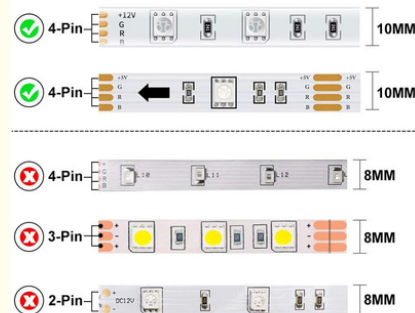
- Place of Origin: Guangdong, China
- Brand Name: Linkop
- Certification: CE
- Model Number: LCSD-
- Minimum Order Quantity: 100pcs
- Price: \$0.2/Pcs
- Packaging Details: bag
- Delivery Time: 3-8 days
- Payment Terms: TT
- Supply Ability: 1000000pcs/ month



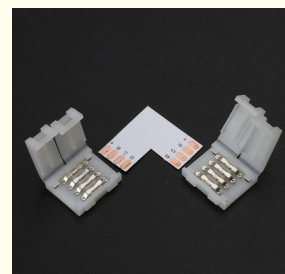
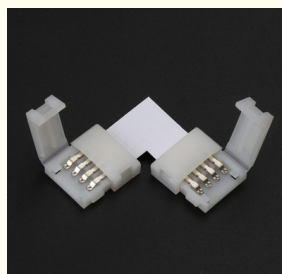
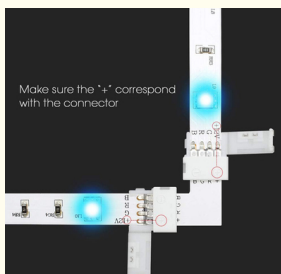
Product Specification

- Pins: 4 Pins
- Protection: IP20 (Mated)
- Dc Connector: 4-pin
- Item Type: L-type Corner Welding Free Connector
- Connection Method: Line To Strip
- Compatible Led Strip Width: 10mm
- Pin Quantity: 4
- Shape: + 4 Pins
- Highlight: L Shaped Corner Led Strip Connector , Solderless Led Strip Connector , 5050 Rgb Strip Connector

Suitable for all 4-pin 10mm 5050 RGB LED Strips



More Images



Product Description

Ip20 Non-Waterproof 4-Pin L-Shaped Corner Solderless Connector For Led 5050 Rgb Strips (Mated)

Product Description:

Our strip light connector can handle strip voltages of 5V, 12V, or 24V DC, making it compatible with various LED strip lights. Whether you are using low-voltage strip lights, our connectors can easily handle them.

Our connector LED strip products are durable and long-lasting. Its operating temperature range is -20 ° C to 60 ° C, which means it can handle extreme temperatures without malfunctioning. Whether you use it in hot or cold environments, you can ensure its performance is flawless.

Our product's connectors do not require soldering and are easy to install. It is compact and can adapt to narrow spaces without any problems. With its compact size, you can easily connect your LED strip without any trouble.

Our LED strip solderless connectors are easy to use. When your light bar encounters a corner or needs to turn, you don't need any special tools or skills to connect your LED light bar. Simply insert the tape into the connector and lock it in place using the provided clip. It's that simple!

Overall, our connector LED strip products are a great investment for anyone looking for a reliable and effective way to connect their LED strips. With its advanced features and easy-to-use design, you can be confident that it will meet all your needs and exceed your expectations. Whether you are a professional or a DIY enthusiast, this product is perfect for you.

Features:

Product Name: L-shaped turning connector

Waterproof Rating: IP20

Connector Length: 10mm

Pins: 4 Pins

Protection: IP20 (Mated)

Strip Volts: 5V 12V 24V DC

Can be used as an LED Connector Strip

Also known as a Flexible LED Strip Connector

Technical Parameters:

Pins:	4 Pins
Shape:	+ 4 Pins
Connection Method:	Line To Strip
Protection:	IP20 (Mated)
Strip Volts:	5V 12V 24V DC
Operating Temperature:	-20°C To 60°C
Wire:	N/A
Waterproof Rating:	IP20
Dc Connector:	Public Female Connector
Pin Quantity:	4

Applications:

Introducing the Linkop LED Strip L-shaped turn Connector, the perfect solution for connecting LED strips without the need for soldering. With its easy-to-use design, this connector is ideal for a variety of occasions and scenarios where LED strip connectivity is required. Whether you are a DIY enthusiast or a professional electrician, the Linkop LED Ribbon Connector is an indispensable tool for your toolkit. With its reliable performance and CE certification, you can be assured of its quality and safety.

Designed and manufactured in Guangdong, China, the Linkop LED Strip Connector is available in model number LCSD-005 and is suitable for connecting 10mm wide LED strips. With its 4-pin design, this connector is compatible with strip volts of 5V, 12V, and 24V DC. With a waterproof rating of IP20 (mated), this Solderless Connector for LED Strips is perfect for a range of applications, both indoors and outdoors. Its simple yet effective design makes installation a breeze, saving you time and money.

Whether you are looking to connect LED strips for your home, office, or commercial space, the Linkop LED Strip Connector is the perfect

solution. With a minimum order quantity of just 100pcs and packaging details in a bag, you can easily purchase this connector in bulk and save even more.

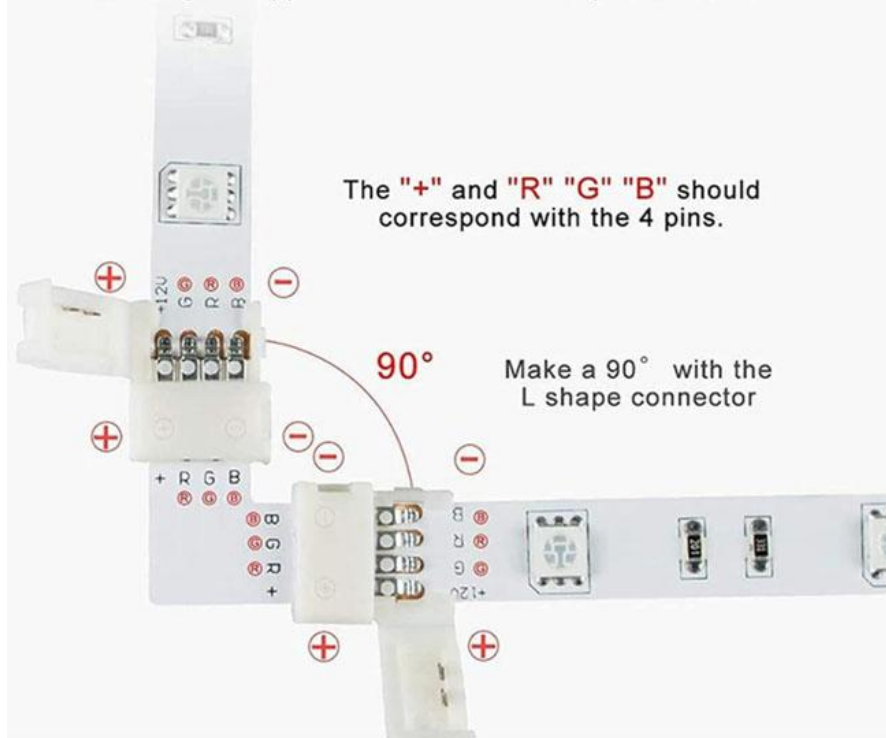
With a supply ability of 1000000pcs per month and delivery times of just 3-8 days, you can rest assured that you will receive your order in a timely fashion. Payment terms are also flexible, with TT payments accepted.

So why wait? Order your Linkop LED Strip Connector today and start connecting your LED strips with ease.



Proper Connection With + And - Anodes

When installing the LED strip light, please note that the positive (+) and negative (-) are connected correctly with PCB board.





Max wattage support: 72W



PBT fireproof material

Perfect Connection in Three Steps



1

Open the clip

2

Feed the LED strip under the LED strip under the metal prongs



3

Close the wire clip



Installation Steps



1. 1pcs L shape connector,
2pcs 4pin LED strip light.



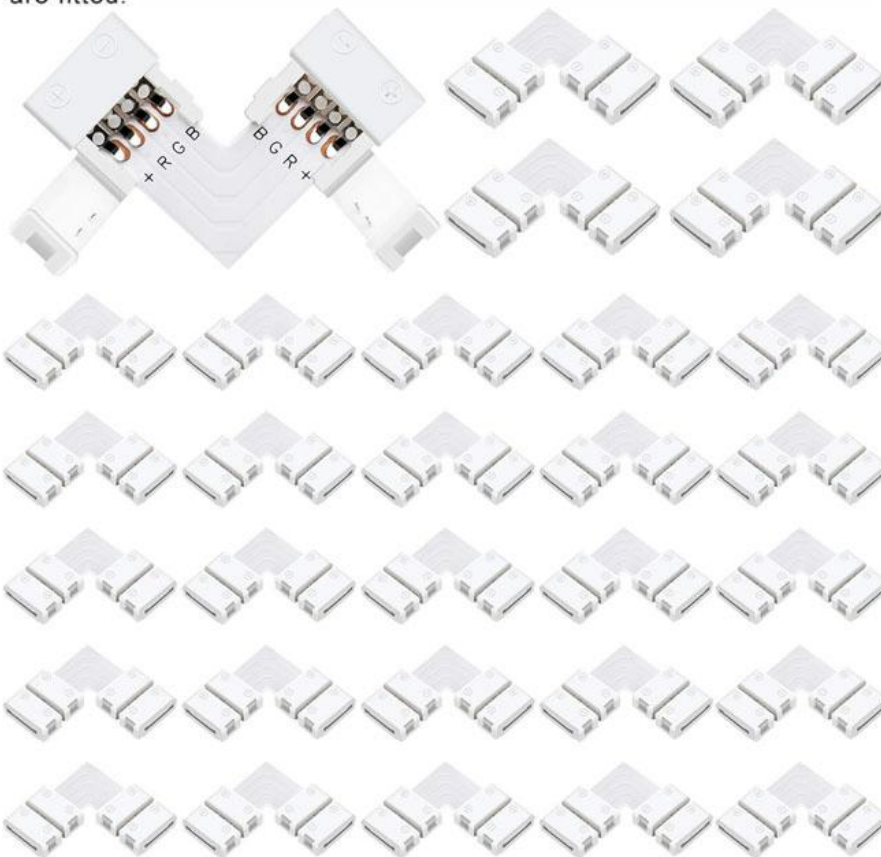
2. Open the L shape connector,
the strip light is aligned with the
+ pole of the connector.



3. The contacts of the light bar
are inserted into the connector to
ensure that the contact points
are fitted.



4. Close the connector cover.



LINKOP[®] Shenzhen Lianchuang Shengda Electronic Technology Co., Ltd

+8613430440444

HS20062023@outlook.com

ledsightstrip.com

Building 6B, Jingnan Industrial Zone, Jingnan Road, Buji Street, Longgang District, Shenzhen