



Toroidal Rgb Led Fill Light With 196leds Bead Quantity 11w 3000-6500k

Our Product Introduction

for more products please visit us on ledslightstrip.com

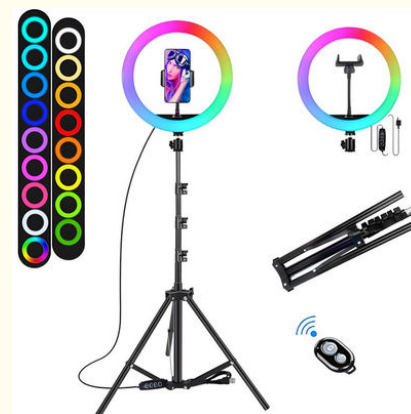
Basic Information

- Place of Origin: Guangdong, China
- Brand Name: Linkop
- Certification: CE/FCC/ROHS
- Model Number: LC-JX-026
- Minimum Order Quantity: 10pcs
- Price: \$3.5/Pcs
- Packaging Details: color box
- Delivery Time: 3-8 days
- Payment Terms: TT
- Supply Ability: 300000pcs/ month

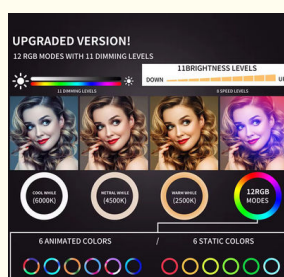


Product Specification

- Bead Quantity: 196leds
- Size: 10"/12"/13"
- Material Quality: ABS
- Power: 11W
- Mounting Options: Hot Shoe Mount And Tripod Mount
- Brightness: Adjustable
- Beam Angle: 120 Degrees
- Wireless Control: Button
- Highlight: **Rgb Led Fill Light, 196leds Bead Rgb Fill Light, Toroidal Led Fill Light**



More Images



Product Description

Led Fill Light With 196leds Bead Quantity 11w 3000-6500k Rgb Toroidal

Product Description:

With its angle adjustment feature, you can easily adjust the light to your desired angle, making it an excellent choice for portrait and product photography. The adjustable brightness feature allows you to customize the light output to suit your needs, giving you full control over the final product.

Whether you are a professional photographer or a beginner, this RGB fill light is an excellent addition to your gear. With a power output of 11W, this LED fill light provides ample light to brighten up any scene. The soft light produced by this fill-in LED light will give your shots a professional and polished look.

With its compact and portable design, you can take this LED fill light with you wherever you go. Whether you are shooting on location or in the studio, this RGB fill light is the perfect tool to help you achieve your vision.

Overall, if you are looking for a high-quality and versatile LED fill light, this product is an excellent choice. With its durable construction, adjustable features, and customizable brightness, you can rest assured that you will get the perfect shot every time. So, why wait? Order your LED fill light today and take your photography and videography to the next level!

Features:

Product Name: LED Fill Light

Type: LED Video Light, LED Soft Light, RGB Fill Light

CRI: 95+

Brightness: Adjustable

Color Temperature: 3000K-6500K,RGB

Power: 11W

Mounting Options: Hot Shoe Mount and Tripod Mount

Technical Parameters:

Attribute	Value
Model	Professional Series
Compatibility	Support
Size	10"/12"/13"
Material Quality	ABS
Power	11W
Bead Quantity	196 LEDs
CRI	95+
Beam Angle	120 Degrees
Angle Adjustment	Yes
Wireless Control	Button

Applications:

The LED fill light product has a CRI of 95+ which ensures that the colors in the images or videos are accurate and true to life. It can be used in various occasions and scenarios, including:

Professional Photography: The LED Photography Light is an excellent tool for professional photographers who require high-quality lighting for their shoots. The color temperature of 3000K-6500K+RGB can be adjusted to match the lighting conditions of the shoot.

Video Production: Whether you are producing a corporate video or a music video, the LED Video Light can be used to create a professional-looking production. The RGB fill light feature allows you to add a creative touch to your videos.

Live Stream: If you are a content creator who live streams regularly, the LED fill light is a must-have accessory. It provides excellent lighting for your videos and ensures that your viewers can see you clearly.

Makeup Tutorials: The LED fill light is also ideal for makeup tutorials. It provides even lighting that ensures that the colors of the makeup

are accurate and true to life.

The product is compatible with most cameras and comes with a color box for packaging. The minimum order quantity is 10pcs, and the delivery time is 3-8 days. Payment terms are TT, and the supply ability is 300000pcs/month.



THREE MODES



Cool light



Natural light



Warm light

SEVEN COLORS



Red light



Green light



Blue light



Rose Red



Yellow light



Purple light



Orange light

COLOR TEMPERATURE MODE

3200K

5600K

Warm light

Cold light

Natural light



Step 1 : Long press the on key for 3 seconds to turn on,
and the LED light starts to blink

Step 2 : Search for device name "AB Shtter3" to connect.
If the connection succeeds, the indicator turns off.

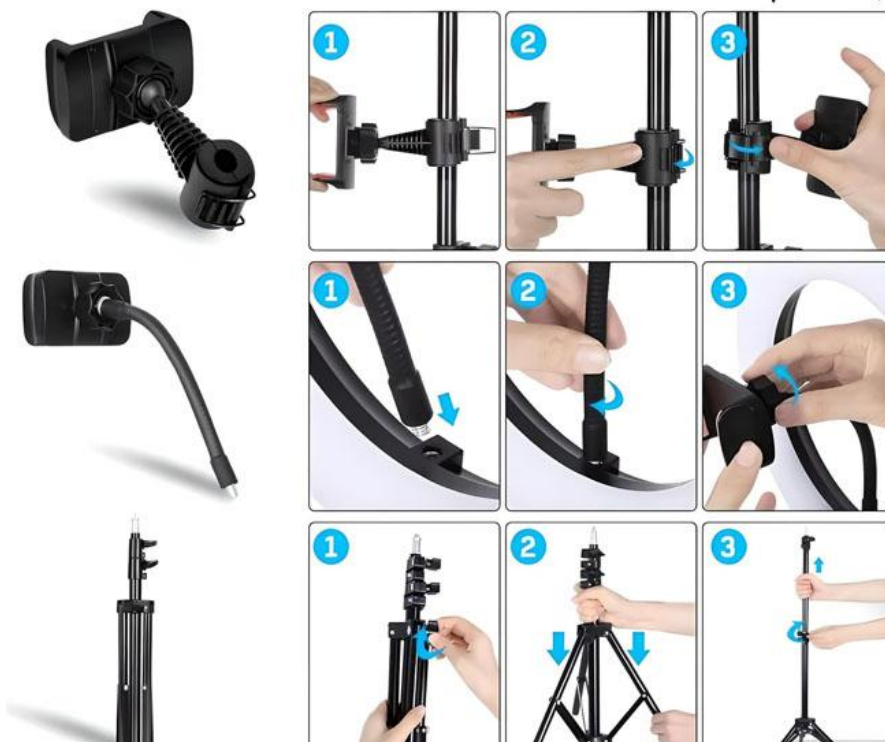
Remote control has memory function,
boot automatically match connected mobile phone

Bluetooth connection



Universal Phone Holder

(Extending up to 3.6 inch wide, compatible with almost all smartphones)



TripodTree



Retractable tripod:
Integral bracket, no
excess parts after folding



Stretchable phone holder:
flexible tube & 360 rotation



ABS fastening screw:
T-shaped structure, easy and
effortless 360° rotation



International common
M1/4 inch interface



Aluminium alloy material,
sturdy and durable



Metal screw sturdy
and durable



Step 1

Turn the screw counterclockwise to loosen the screw.



Step 2

Use both hands to divide the corner frame into two sides.



Step 3

Stretch the rod up, rotate counterclockwise to tighten the two rods.



Step 4

Install the phone holder to the ball and rotate until tightened



Step 5

Install the Pan-tilt on the ring lamp and rotate until tightened.



Step 6

Install the tripod, lock it at desired length clockwise

LINKOP[®] Shenzhen Lianchuang Shengda Electronic Technology Co., Ltd

+8613430440444

HSH20062023@outlook.com

ledslightstrip.com

Building 6B, Jingnan Industrial Zone, Jingnan Road, Buji Street, Longgang District, Shenzhen