



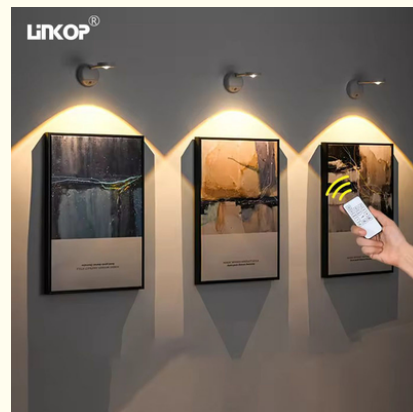
Three Color Adjustable Led Motion Sensor Spotlight Remote Control

Our Product Introduction

for more products please visit us on ledslightstrip.com

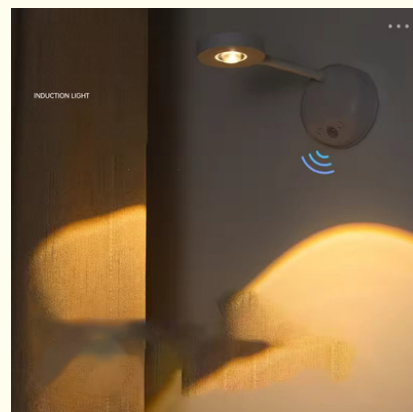
Basic Information

- Place of Origin: Guangdong, China
- Brand Name: LINKOP
- Certification: CE
- Model Number: LC-MZ-L2201
- Minimum Order Quantity: 10pcs
- Price: \$6/Pcs
- Packaging Details: color box
- Delivery Time: 3-8 days
- Payment Terms: TT
- Supply Ability: 200000pcs/ month

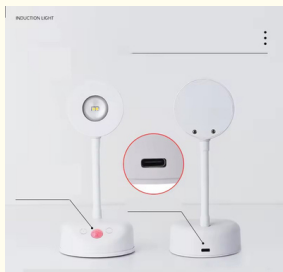
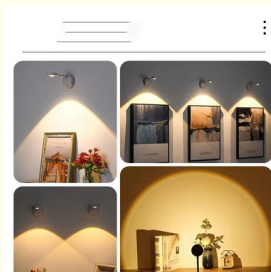


Product Specification

- Brightness: Adjustable
- Size: 1200mAh/2000mAh
- Waterproof: No
- Sensor Type: Motion Sensor
- Sensor Range: Up To 10 Feet
- Application Scenario: Wardrobe/ Display Case/ Cabinet/ Desk/ Stairs/ Bedside
- Power Source: Rechargeable Lithium-ion Battery
- Light Source: LED
- Highlight: **Adjustable Led Motion Sensor Spotlight, Remote Control Led Motion Sensor Spotlight, Three Color Adjustable Motion Sensor Spotlight**



More Images



Product Description

Three Color Adjustable Led Motion Sensor Spotlight And Remote Control

Product Description:

The LED motion sensor spotlight is easy to install and comes with a self-adhesive installation method that allows you to place it anywhere without the need for any tools or screws. This lamp is powered by a large capacity rechargeable lithium-ion battery, which means you don't have to worry about frequently replacing the battery. Just charge it and enjoy several weeks of use before it needs to be charged. With its motion sensor technology, this lamp is highly suitable for use as a display cabinet light. As long as you get close to the display cabinet, the light will turn on. In addition, it is very suitable for use in wardrobes, cabinets, and even on your desk or bedside table to increase convenience.

Don't be satisfied with insufficient lighting at home or in the office. Upgrade to LED motion sensor lights and enjoy the benefits of motion sensor technology and large capacity batteries. I'll get yours today, easily illuminating your space.

Features:

Product Name: LED motion sensor light

Sensor Range: Up To 10 Feet

Size: 1200mAh/2000mAh

Installation Method: Double-sided tape mounting

Material: ABS

Sensor Angle: 120 Degrees

Features: **Motion sensor,Remote control,Touch**

Brightness control

No wiring required

Technical Parameters:

Light Source	LED
Sensor Angle	120 Degrees
Installation Method	Double-sided tape mounting
Sensor Range	Up To 10 Feet
Power Source	Rechargeable Lithium-ion Battery
Dimensions	1200mAh/2000mAh
Sensor Type	Motion Sensor
Material	ABS
Size	Remote control model / Without remote control
Waterproof	No

Brightness control: yes

Without wiring: Yes.

Wardrobe light: Yes.

Applications:

The motion sensor spotlight is easy to install and comes with double-sided tape, eliminating the need for wiring. It also has a Type-C charging interface that can be charged using a USB 5V charger. This lamp is not waterproof, so it is best to use it indoors or in a dry environment.

This product has passed CE certification, with a minimum order quantity of 10 pieces. It has a color box and can be delivered within 3-8 days. The payment method for this product is TT, and the supply capacity is 200000 pieces per month.

With its versatility and convenience, motion sensor cabinet lights are perfect for those who want to add extra lighting to their homes without the hassle of wiring. For those who want to save energy, it is also perfect because it only opens when motion is detected.



Human sensing



Rechargeable



No wiring



Multi-function



188MM

82MM



Human sensing



Rechargeable



No wiring

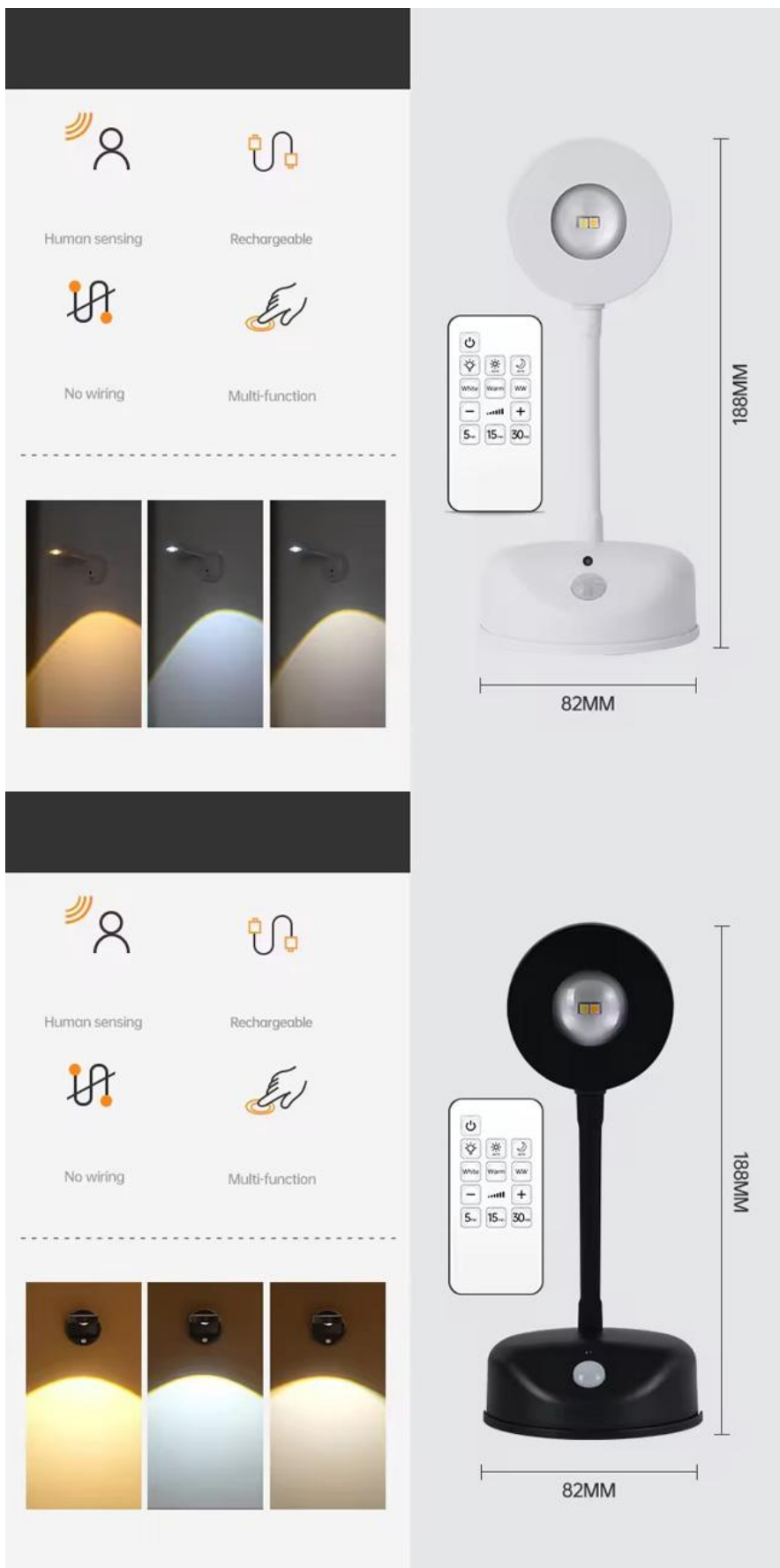


Multi-function



188MM

82MM



LINKOP® Shenzhen Lianchuang Shengda Electronic Technology Co., Ltd

+8613430440444

HSH20062023@outlook.com

ledslightstrip.com

Building 6B, Jingnan Industrial Zone, Jingnan Road, Buji Street, Longgang District, Shenzhen

